

POTATO TECHNOLOGY
BEET TECHNOLOGY
VEGETABLE TECHNOLOGY

GRIMME

The REXOR Platinum series





Contents

Special features at a glance	4–5
Defoliating systems	6–11
Digging units	12–17
Cleaning	18–25
Bunker	26–31
Chassis	32–39
Engine	40–43
Operational functions	44–49
Turning night into day	50–51
myGRIMME	52–57
Technical specifications.....	58–59

The REXOR Platinum series

For over 10 years, the REXOR series has been setting standards when harvesting beets, chicory and celeriac. A large number of innovations and further developments have been incorporated into the 653 hp two-axle REXOR 6200 Platinum with a 20-ton bunker (30 m³) and the three-axle REXOR 6300 Platinum with a 30-ton bunker (45 m³). From the defoliation system to the digging unit and cleaning through to unloading, the focus is on gentle handling of the crop to maximise output and potential yield. The defoliator, type FM, and the Oppel wheels for digging are all unique Three further defoliation systems and a walking share option are available on request.



REXOR Platinum

Special features at a glance:

Defoliating system

- INNOVATION: The original defoliating by FM: harvesting the whole sugar beet crop without leaves at maximum mass yield by use of a defoliation system without scalping unit
- 3 further defoliation systems with integrated minimal scalper unit available. Thus GRIMME offers the greatest variety of defoliation systems on the market.

Digging systems

- optimum view of the digging units to enable a fast reaction to changing conditions
- Oppel wheel: actively, hydraulically driven for a maximum crop protection, high cleaning already at a very early stage of crop flow into the machine
- Walking share: fast and individual depth adjustment of each row for changing conditions

ErgoDrive cab

- NEW: relaxed working thanks to specially soundproofed cabin with premium comfort seat
- intuitive operation of the machine by the use of two CCI 100 operating terminals as well as a multi-functional lever and a control panel in the armrest
- Visual Protect: Monitor all functions via the on-board cameras
- ProCam: Gives the best view around the total machine for more safety and better overview
- Coming home function for safe stepping down from the machine
- compressed air connection besides the cabin for convenient cleaning

Cleaning

- Transport web
 - largest passage between the front wheels for highest throughput capacity, even under extreme conditions
 - automatic reversing of the web, in case of stone that get jammed, low risk of blockage, higher driving speeds possible
- Speedtronic: driver relief and increased throughput with improved crop protection thanks to an automatic, load-dependent speed control of the cleaning turbines and the ring elevator

Bunker and unloading web

- NEW: redesigned narrow bunker shape in the front, for an improved visibility of the unloading conveyor
- NEW: Drop brake for a gentle transfer of crop from the ring elevator into the bunker
- a long and particularly wide unloading conveyor with double bend enable a fast and extremely gentle unloading
- the redesigned unloading conveyor with double bend leads to a reduced vehicle height and a gravity which is shifted towards the centre of the vehicle, thus increasing stability

Engine and drive

- NEW: powerful Mercedes-Benz engine (MTU) with 480 kW / 653 hp and an exhaust emission standard stage V
- improved driving comfort due to stepless hydraulic drive with electric control
- long maintenance intervals due to high-quality components for the drives "Made in Germany"
- easy maintenance due to good accessibility from all sides

Convenience

- relaxed harvesting, even in the dark, thanks to LED lighting (33 working lights)
- NEW: Illumination of the engine compartment with LED lighting-strips
- NEW: the tool box for maintenance work is arranged on a swivelling platform, for ergonomic and convenient work
- NEW: 15 l hand wash tank
- Storage space for wearing parts
- compressed air connection in the engine compartment for convenient cleaning

Ring elevator

- NEW: up to 25 % more throughput due to specially cranked conveying bars, which lead to a pocket like design
- NEW: more even and gentle filling of the ring elevator due to modified deflection geometry
- NEW: reduced build-up of sticking soil and beet leaves due to a permanently rotating plain roller between second cleaning turbine and the ring elevator



INNOVATION!

The original defoliating by FM

With the extremely gentle and unique defoliator, type FM, GRIMME stands for excellent harvest results. The result are beet heads without any leaves and this achieves up to 10 % higher volume yields than with the conventional scalping method.



The result

A perfectly defoliated beet for maximum mass yield and profit.



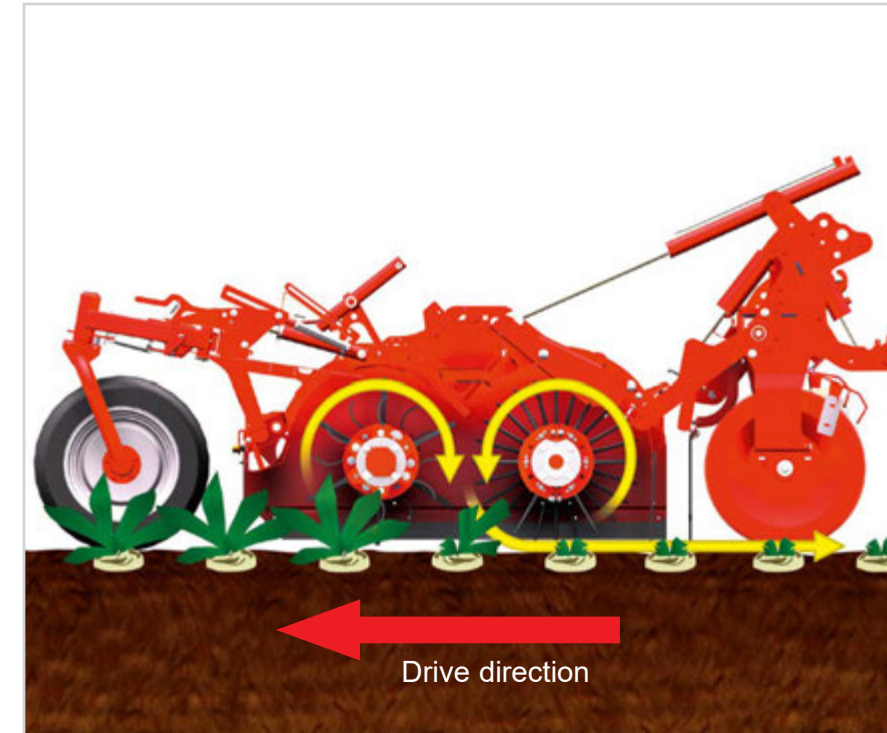
The design features

The FM is equipped with two counter-rotating flail shafts which defoliate the crop from all sides.



Functionality

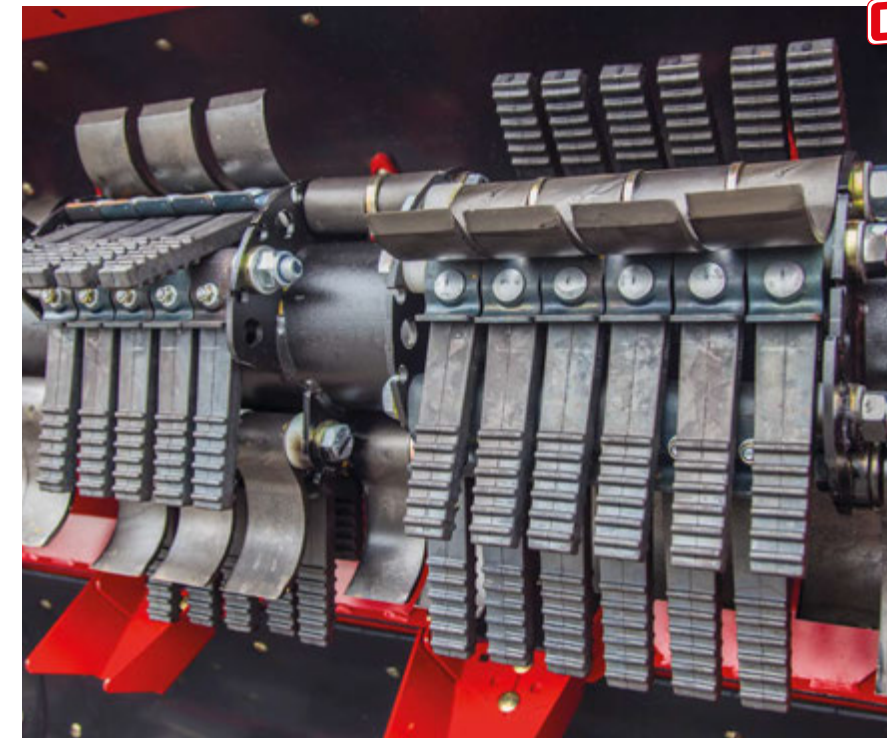
The multi-shaft is fitted with a combination of steel and rubber flails. The shorter steel flails chop off the beet leaves as well as the weeds between the rows. The longer rubber flails gently defoliate the crown of the crop from the rear. Rubber flails are mounted on the cleaning shaft for a gentle defoliation of the crop from the front side.



INNOVATION!

Easy and fast maintenance

due to the possibility to replace single rubber flails individually.



Multi topper

The multi topper chops the leaves and cleans the beet head so that the green leaves around the head are removed. It consists of a multi-shaft with a combination of steel and rubber flails and a following minimal scalper unit. Even in dry crop with wilted leaves the minimal scalper unit works in an optimal way. The result is a minimally scalped beet without any remaining green leaf structure.

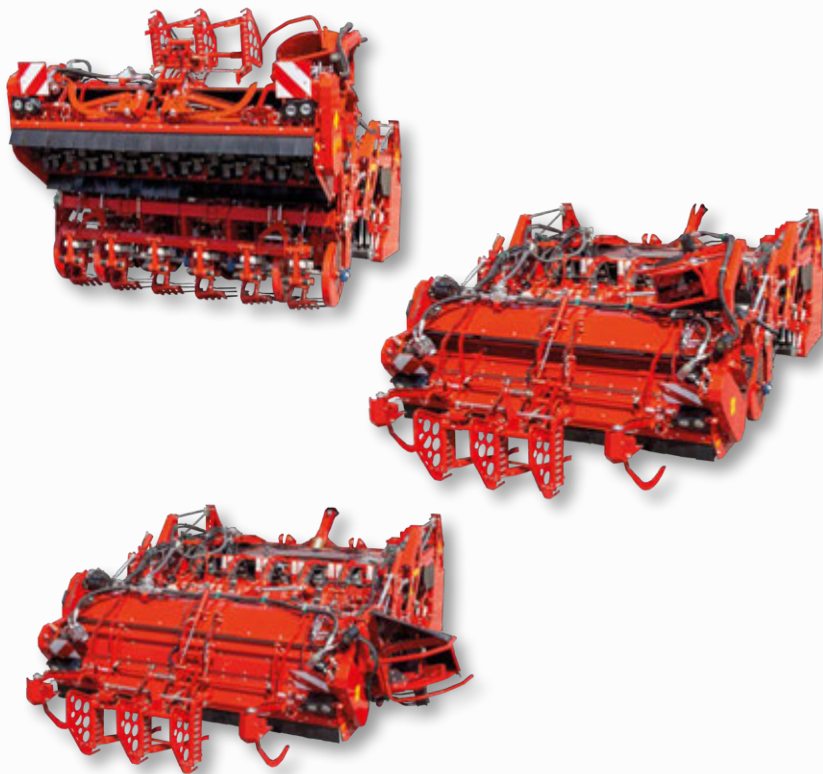


INNOVATION!



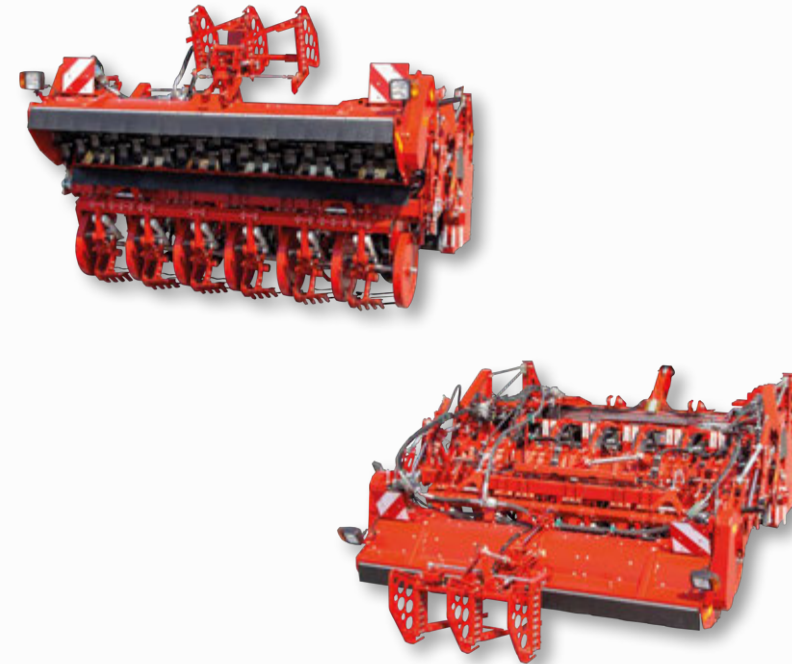
Variable chopper

The variable chopper allows for easy digging in heavily weedy crops. The operator can easily shift between mulching between the rows or side discharge (onto the harvested land) from the drivers cab. When using the side discharge unit, both the traction and the slope stability are significantly improved in wet conditions.



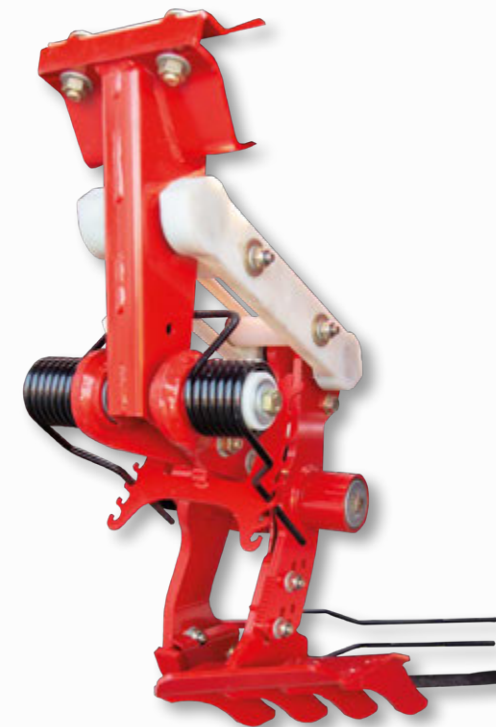
Chopper

The chopper in combination with minimal scalper for universal use and a failure-free operation even under the most adverse conditions. The leaves are deposited evenly inline between the rows.



Minimal scalper (Mini NS)

The unique minimal scalper unit does not require any lubrication points and is therefore maintenance-free. The sharp cutter separates the beet head properly from the beet body. Each beet is optimally scalped. As an option, long-lasting, wear-resistant cutting blades with tungsten coating can be used that no longer require re-sharpening.



The Oppel wheel - uniquely gentle

The hydraulically driven and side-moving Oppel wheels are characterised by outstanding crop protection and very good cleaning, even before the crop is lifted onto the following cleaning devices. This prevents very little soil and trash from entering the machine, which means that the subsequent cleaning devices can be adjusted more gently. In addition, the Oppel wheel is significantly less subject to wear than walking shares, which means less downtime for maintenance.



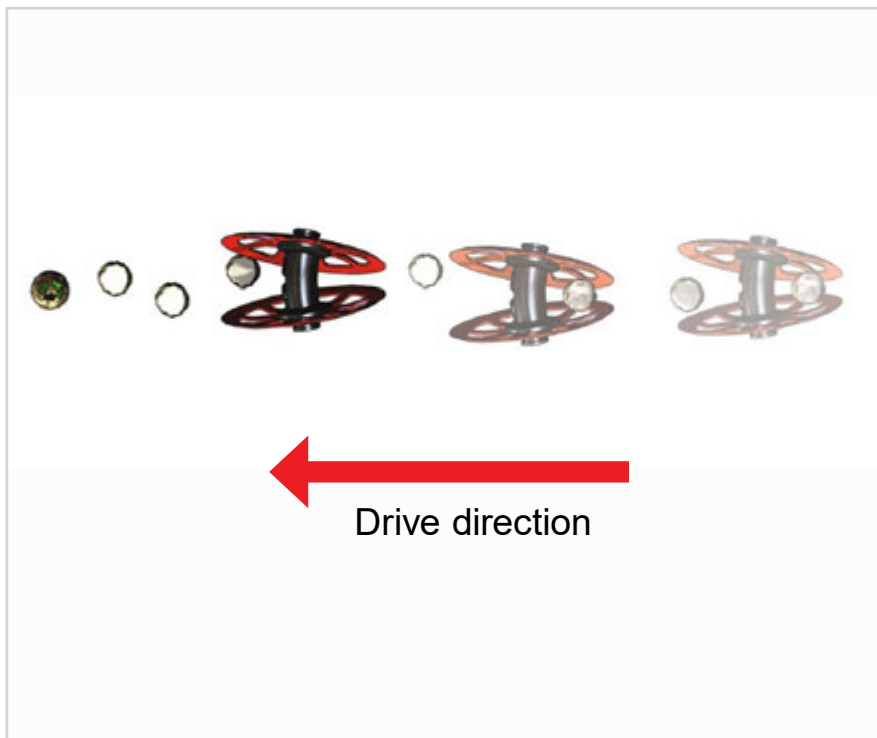
High cleaning

by the adjustable advance of the Oppel wheels depending on the digging conditions. The crop is lifted out of the ground in such a way, that only little soil adheres and almost no breakage of the beet tip occurs, even under unfavourable conditions.



Careful digging

by use of Oppel wheels, in unevenly grown crops Due to the sideways motion of +/- 40 mm, the Oppel wheel can be guided exactly along the rows.



Optimum view

onto the digging unit for a quick adjustment of the settings to changing harvest conditions.

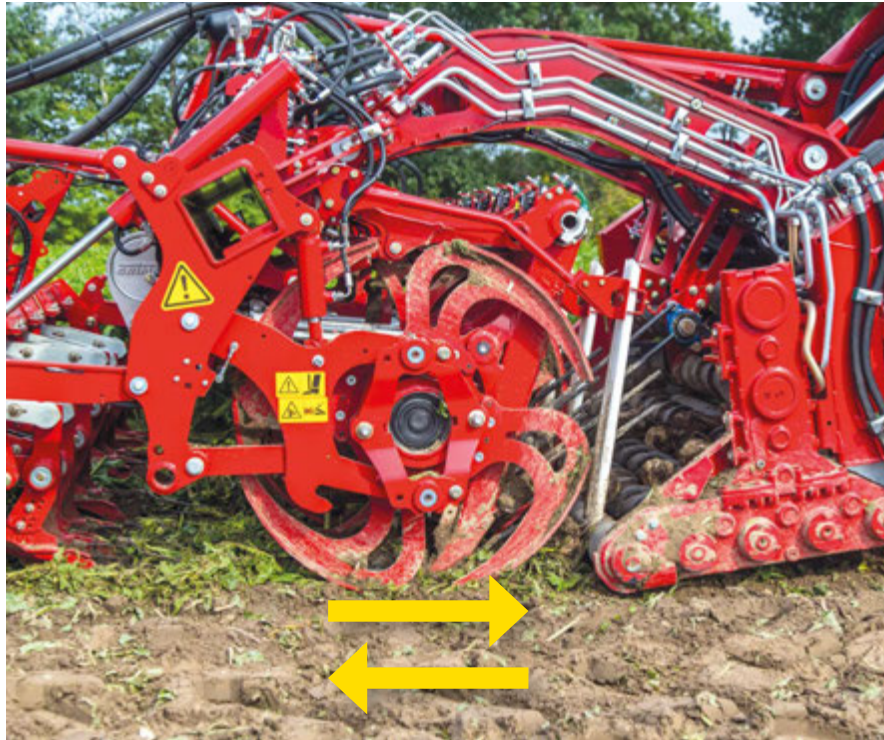


Easy and fast maintenance

due to an easy and good access to the components of the intake.

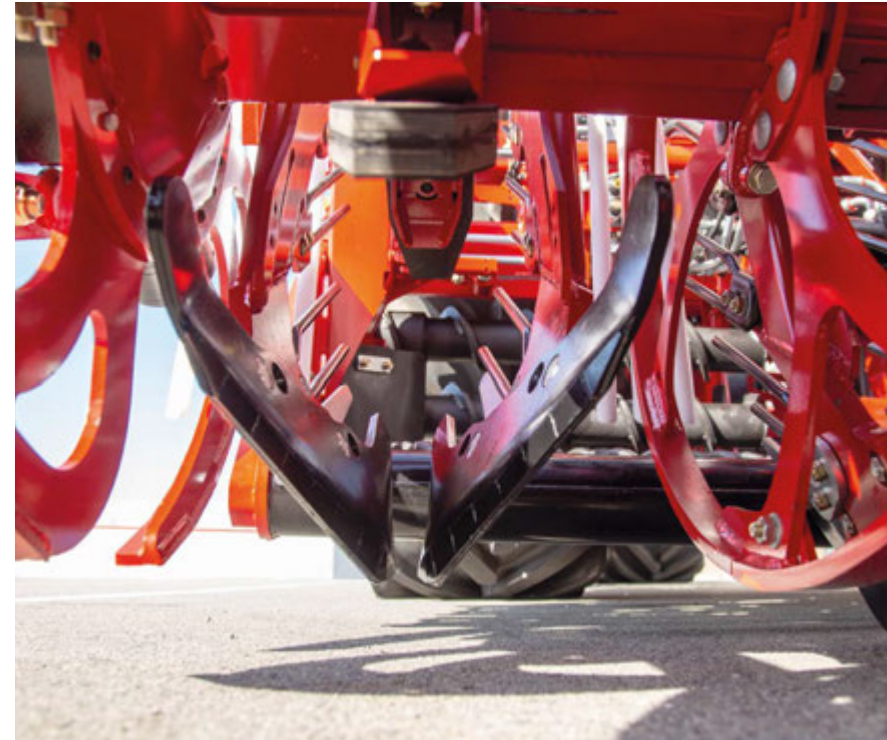
The walking shares

Walking shares can be used universally. They operate in a clean and reliable way under changing conditions.



Optimum view

onto the digging unit for a quick adjustment of the settings to changing harvest conditions.



React flexibly

The walking shares lift the beets out of the ground and transfer them onto the roller table. The depth of the walking share of each individual row can be adjusted separately and continuously depending on the ground contour.

INNOVATION!

Easy maintenance

good accessibility by lifting up the complete intake from the cab to minimise set-up times and increase the daily output.



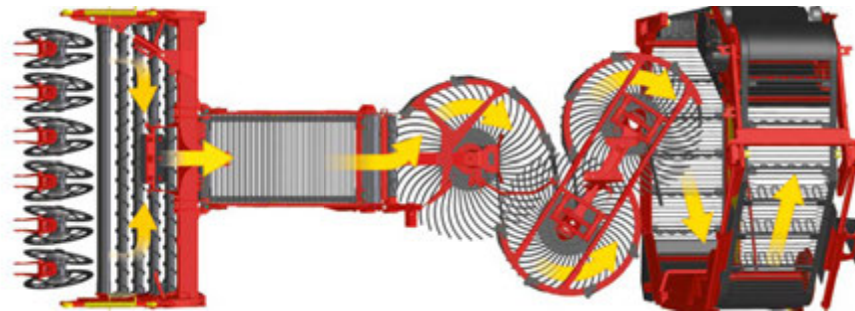
The cleaning

From the roller table via the transport web and cleaning turbines up to the ring elevator. The crop is cleaned both effectively and gently - at maximum throughput. Due to the good cleaning of soil and trash by the Oppel wheels, the subsequent cleaning devices can be adjusted much more gently and thus minimise the risk of damage to the harvested crop. An additional bonus: The wear of the cleaning devices is also minimized and so are the costs.



Effective cleaning

The crop flow:
Roller table - conveyor - turbines -
ring elevator



Gentle transfer

of the crop by use of the ejector shaft
onto the easily visible roller table.
Already there, the beet is effectively
cleaned from soil and other trash



Trash separation

by the standard steel extracting roller.
Comfortable control of the extracting
function from the driver's cab.



Minimized wear costs

due to the optional available wear
package for the roller table (rollers no.
2-5) and the optional segment
extracting roller (innovation). The
segment extracting roller reduces the
risk of stone jamming.



INNOVATION!

Minimized harvest losses

thanks to the optional roller package
with the largest roller diameter (rollers
2 to 4), especially for stocks with small
beets and chicory the roll diameter is
114 mm instead of 101 mm.



Highest throughput

with the 90cm wide conveyor belt
between the front wheels through 50 cm
continuous height. In the case of stone
clamps, the conveyor automatically
reverses without the driver having to
dismount.



Gentle transfer

The harvested crop is transferred from
the conveyor to the sieving unit with
minimal losses due to the PUR
segments.



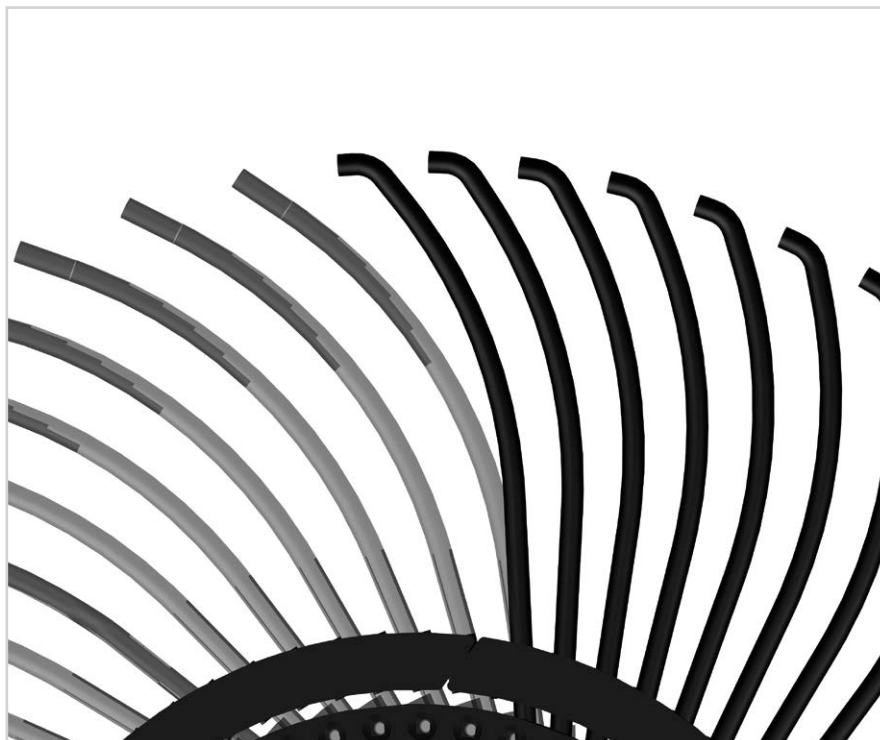
Relief for the driver and highest crop protection

thanks to the fast and sensitive, standard Speedtronic. Speedtronic is a load dependant, automatic speed control system for the cleaning turbines and the ring elevator. This reduces fatigue for the driver. The risk of blockages is minimized and the throughput is increased while crop protection is increased.

Speedtronic

Improved Product Flow

thanks to the optimised arrangement and shape of the sieve tines (right).



Up to 80 % time saving

due to the quick-change system. For optimum cleaning, the guide bars and spring-tine kits can be quickly replaced/ adapted to changing harvest conditions. Possible incorrect settings when changing the guide bars are minimised by the special design. Losses of small beets during intensive cleaning are reduced by a combination of guide bars in lowest position and spring tines mounted above it in a single package.



Protection against earth and leaf structure.

Reduced build up of sticking soil and
beet leaves due to a permanently
rotating plain roller between second
cleaning turbine and the ring elevator.



Up to 25% more throughput

The ring elevator is kept at a constant
speed which is gentle on the product
thanks to the unique, deep pocket
design.



Gentle bunker filling

The optional fall brake minimises the
impact on the bunker floor.



The Bunker

the REXOR 6200 Platinum and the REXOR 6300 Platinum are equipped with 20 tonne (30m) and 30 tonne bunkers (45m), therefore can be used on long runs in the field. The GRIMME unloading concept carries even the largest amounts of crops securely accross the 1.80m wide unloading web from the bunker into the up to 10 m wide clamp within a remarkably short time. The unloading web, with its transfer height of up to 4 m, permits you to use larger bulkers/trailers in non stop digging operations. Due to the optimised new shape of the bunker the driver has a perfect view at the unloading elevator.



30 m³ Bunker Volume

The REXOR 6200 Platinum has a capacity of 20 tonnes. The bunker is speedily emptied via the unique bunker floor concept and cross scraper chain conveyer. The speed of the cross scraper chain conveyor is controlled automatically.



45 m³ Bunker Volume

The 30 tonne capacity makes the REXOR platinum the ideal machine for long runs in the field. The unloading time for both models is less than a minute.



Even filling

When the specified target level is reached, the bunker filling screw changes direction.



Lower Vehicle Height

The additional bend in the unloading elevator moves the machine's centre of gravity to the centre of the machine in the harvesting position. It makes it easier to drive under low-voltage power lines and branches. High stability on slopes.



Increased Crop Protection

A 5cm fall breaker ensures the crop is transferred gently and reduces damage. The compaction of the harvested crop is therefore avoided.



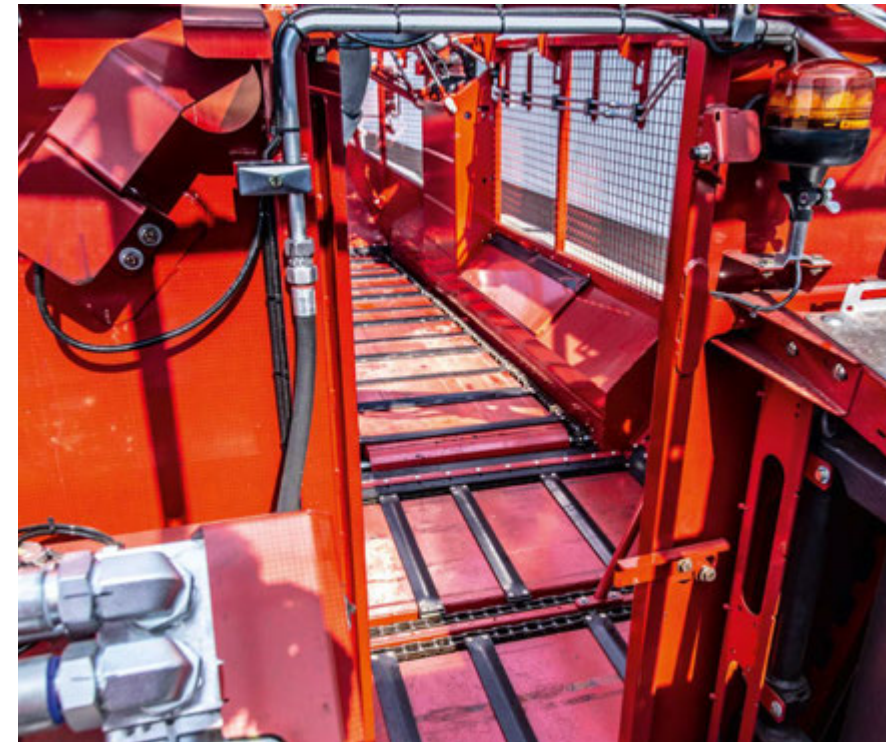
Gentle Unloading

The crop drop height is significantly reduced due to the design of the end of the elevator.



Simple Attachment

in the bunker over the engine for maintenance.



Additional angular plate

Large storage compartment for maintenance materials such as oils, spare parts or AdBlue (REXOR 6300).



The Chassis – Light on the ground and manoeuvrable

Despite the vehicle size, the main frame and chassis concept of the two REXOR models 6200 and 6300 combine a high degree of manoeuvrability with a high level of stability on slopes and effective compaction protection. The two-part main frame has an articulated joint with a $\pm 35^\circ$ bending angle, thus making it possible for both models to achieve an inner turning circle of 7.5 m in conjunction in four-wheel steering mode. In addition, this chassis concept makes it possible to select low-impact travel left and right, thus protecting the ground from compaction by the machine.

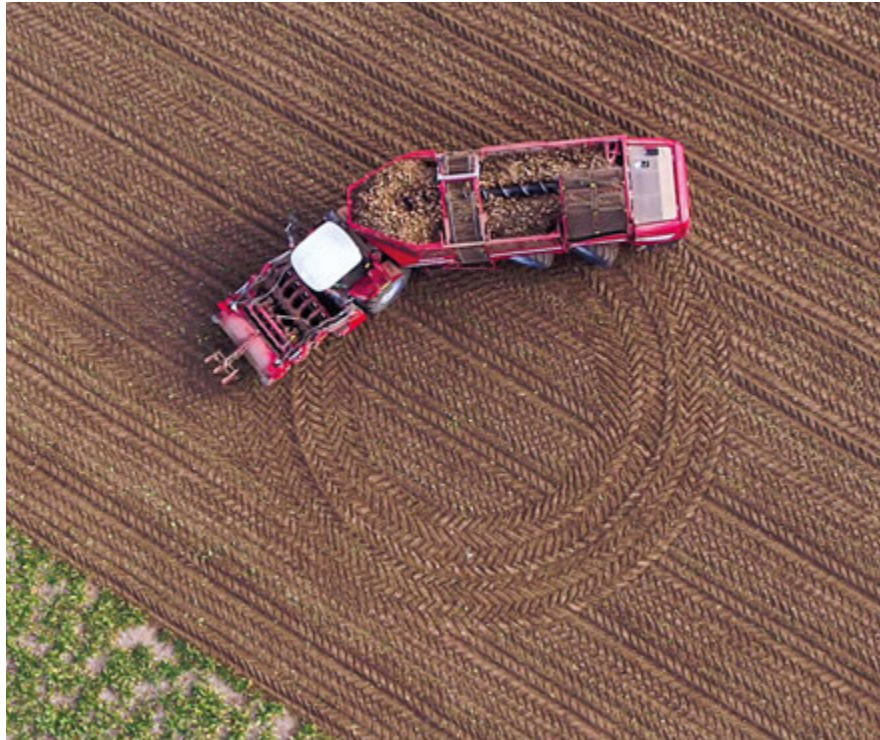


Highest manoeuvrability

due to the large steering angle of the steering axles and the articulated joint.

The front axle has a steering angle of $\pm 10^\circ$. The rear axle of the REXOR 6200 has a maximum steering angle of $\pm 25^\circ$. The REXOR 6300 has a maximum steering angle of $\pm 20^\circ$ at the middle axle and $\pm 32^\circ$ at the rear axle.

Both REXOR Platinum models have an inner turning radius of only 7.5m.



Maximum steering angle

The articulated joint permits a maximum steering angle of $\pm 35^\circ$. On account of the large angles of the steering axles, the REXOR Platinum is one of the most versatile in the market.



High stability on slopes

Active pendular support BaSYS.

On slopes, the rear chassis section automatically supports itself on the front chassis section. Allows optimum stability of the entire machine under all conditions.



Optimum compaction protection

Spreading the load over a wider area reduces compaction. Due to this, the harvester drives with offset track, thus clearly reducing the ground pressure by distributing it across the entire width.



Front Axle Tyres

- 1 | Michelin IF 800/70 R38 CEREXBIB**
REXOR 6200 and 6300 Series
- 2 | Mitas 800/70 R38**
Option for REXOR 6200 and 6300 Platinum
- 3 | Mitas 900/60 R38**
Option for REXOR 6200 and 6300 Platinum



Middle Axle Tyes

- 1 | Michelin IF 1000/55 R32 CEREXBIB**
REXOR 6300 Platinum series
- 2 | Mitas 1050/50 R32**
Option for REXOR 6300 Platinum



Rear Axle Tyres

- 1 | Michelen IF 1000/55 R32 CEREXBIB**
REXOR 6200 Platinum series
Option for REXOR 6300 Platinum
- 2 | Michelin IF 900/60 R32 CEREXBIB**
REXOR 6300 Platinum series
- 3 | Mitas 900/60 R32**
Option for REXOR 6300 Platinum

Unproductive time is minimised

Through the 40 km/h version of both REXOR models. These series are 20 km/h, there are also machine options with 25 or 32 km/h



Safe road travel

through the use of the transport kit. For road travel, the wheeled support unit is coupled and uncoupled automatically from the cab by the operator. The load on the front axle is relieved and prevents the machine from swinging up. In the EU, the wheeled support unit is a legal requirement.



Compliance with the permissible axle load

As a result of the additional rear axle support on the REXOR 6200 platinum. When driving on the roads, this must be lowered down. In the EU, the additional axle is a legal requirement.



The engine - powerful and economic

The sophisticated hydraulic system, in conjunction with the innovative control technology and a new generation of engines with SCR exhaust gas cleaning technology, forms the basis for economic fuel consumption and powerful performance.



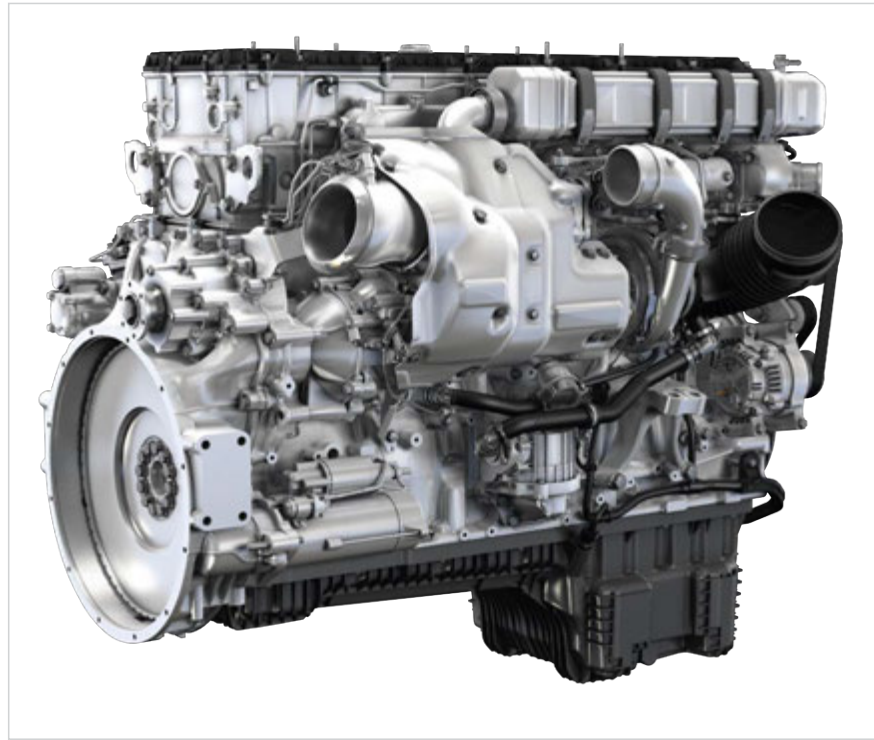
More fuel efficient

Mercedes Benz (MTU) diesel engine
with 480kW/653 PS with 15.6 litres
capacity for maximum performance in
the field and on the road.

High quality, German produced
components are used in the
transmission

Mercedes Benz stands for:

- The most modern engine technology
- Economical engines
- Low weight engines
- Excellent supply of spare
parts as well as a massive service
network worldwide



Very Good Access

The engine compartment and the
bunker of the REXOR are easily
accessible, using a ladder on the left
side of the machine.



Easy Maintenance

The large safety guards on both sides of
the machine make it easy to carry out all
the necessary maintenance work.



Working in the dark or low light

is possible due to the lighting on the
inside of the safety guards.



Control and Comfort - the secret of a relaxed working day

The new cab with its ErgoDrive control system offers every conceivable comfort and is designed to reduce fatigue and maintain full productivity over a long harvesting day. Automatic air conditioning, hands-free telephone and a quality CD-/MP3-Radio are additional features for your convenience. The driver assistance systems with autopilot and SpeedTronic, they reduce the operator's work load during digging.



Comfort Cab

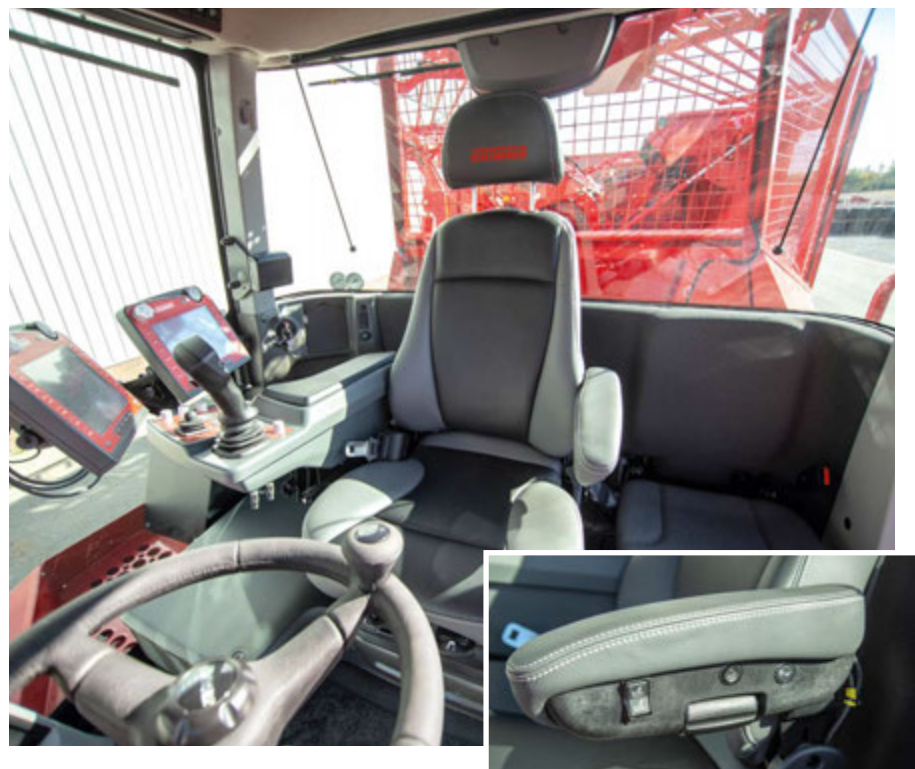
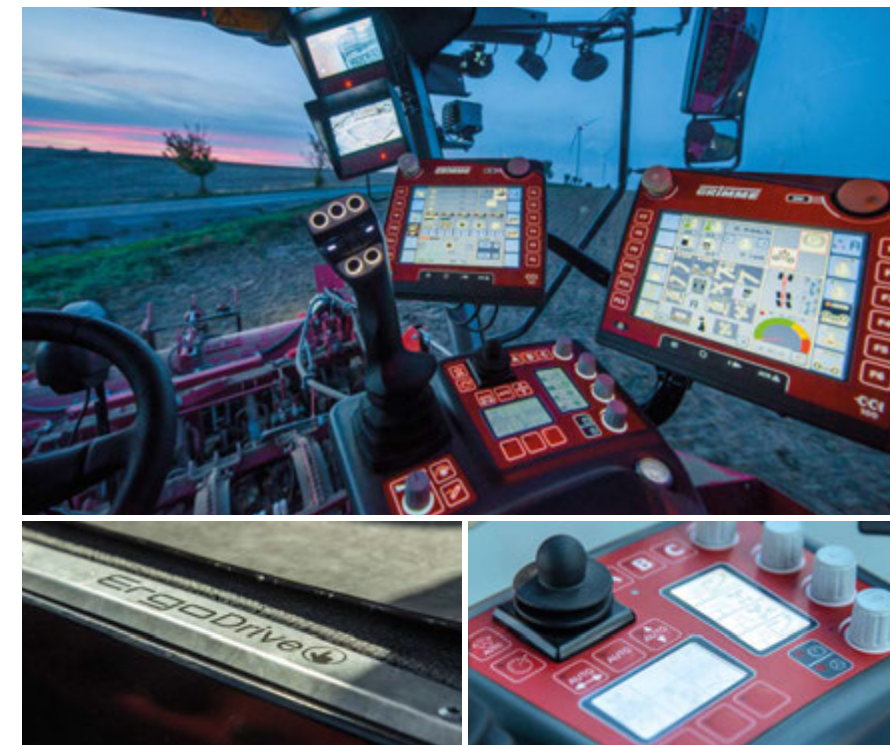
The cab with ErgoDrive control system is equipped as standard with 12 LED work lights, heated mirrors which are electrically adjustable and pneumatically foldable, a leather, comfort seat with air suspension and adjustable arm rest, a passenger seat; CD/MP3 radio with Bluetooth hands free system, air conditioning, sun visors, 'coming home' function and 12 V electrical sockets.

ErgoDrive



Intuitive Operating Concept

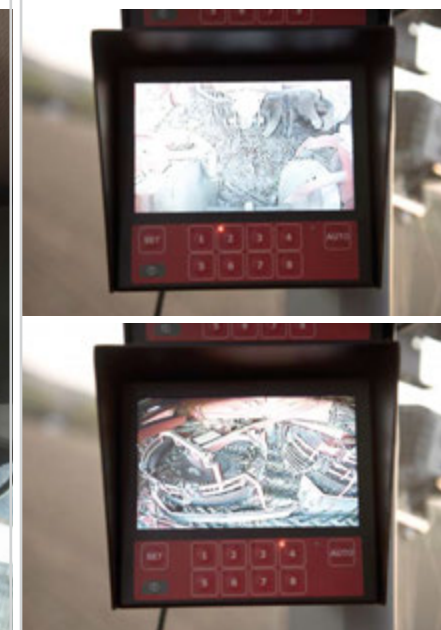
A key feature of the cab is the ErgoDrive operating concept with multi-function joystick, a keypad integrated into the ergonomic armrest and touch screen terminals which enable the operator to programme and access all main functions individually. All machine functions and settings are displayed on the two CCI 100 operator terminals. Machine parameters can be easily adjusted.



ProCam



Visual PROTECT



Keeping everything in sight

The ProCam monitoring system, which is available as an option, provides a connection with the GRIMME video system which gives a real display of the whole machine without any blind spots. Visual protect, which comes as an option, facilitates all round monitoring of your harvester. Using several cameras in the machine, the driver gets an automatic view on different components in the case of an event which deviates from normal operation, the activation of machine functions or the modification of machine settings via operator terminal.

Optimum view

The operator has a clear view of the unloading elevator from the driver's seat due to the new optimal shape of the bunker.



Careful digging

Air compressor connections at the cabin side and in the engine compartment allow for easy cleaning. Compressed air hose and pistol are also included with the machine toolbox.



Automatic Lubrication

The automatic lubrication system provides grease to all heavily stressed lubrication points. A ball valve next to the cab has to be opened for filling.



NEW

Clean Clamps

After maintenance, cleaning or when working in the field, a 15 litre handwash container is available to wash your hands. The hand washing container is easily removable for filling or emptying.



NEW

Easy and fast maintenance

An ergonomically placed and optimally equipped tool box is in the back of the machine. The tool box comes as standard and doesn't need to be taken out of the machine.



Everything at hand

Storage space for wearing parts.



NEW

Turning night into day

with 33 LED working lights. Relaxed work even at night, through the comprehensive illumination of the entire machine with 33 LED-working lights for the best view.



NEW
INNOVATION!

myGRIMME

All GRIMME beet harvesters from 2017 onwards are able to communicate with the new customer based portal myGRIMME, using an encrypted data protocol. Thus, machine-specific equipment, machine status and other information can be retrieved at any time in the portal. Further information at www.grimme.com
Register for free and get started with all the advantages of myGRIMME.



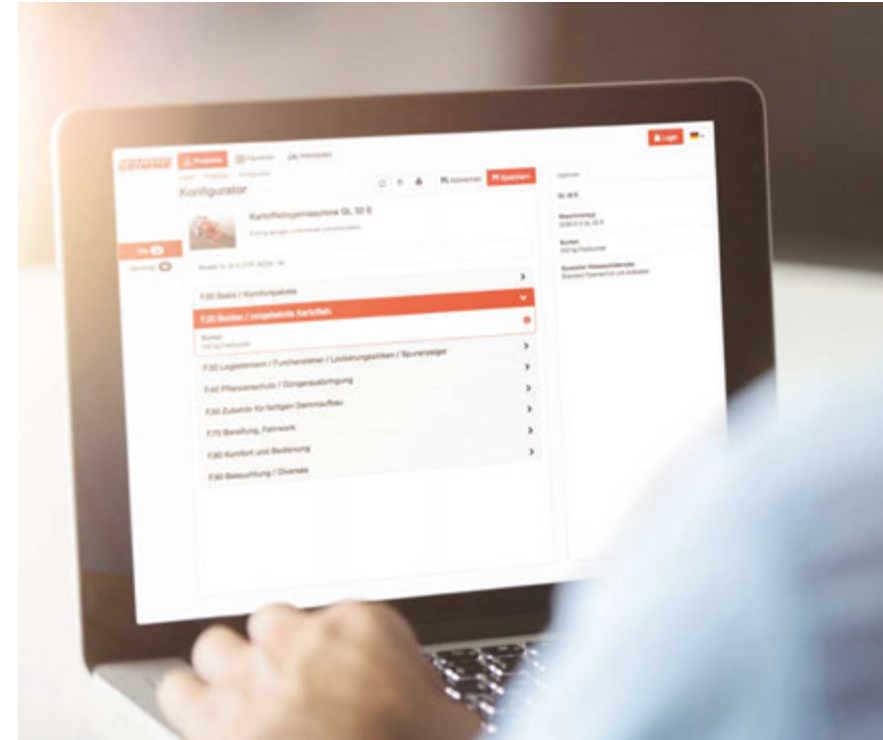
My Machines

All machines are displayed clearly with their relative machine options. Machine specific documents such as operator manual and spare parts book can be accessed at any time.



Online-configurator

With the online configurator, the latest machines can be individually configured giving you the option to discuss your exact machine specification with the dealer before having to create an appointment.



myJobs

among them is the clear and powerful order management, in which all machine and telemetry data from the GRIMME machines are displayed. Because the system can distinguish between road and field work, in-field jobs are automatically generated and all required information is stored. This eliminates the operator manually having to create jobs.



GRIMME Original Parts

An identification of spare parts and the checking whether they are available regionally is possible via myGRIMME.



Map view

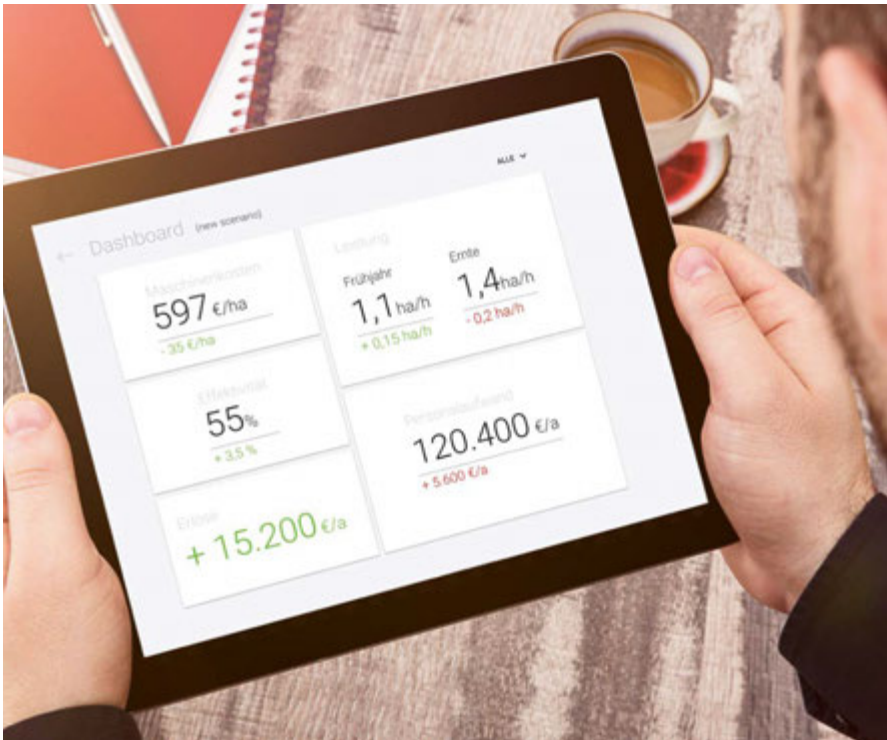
Machine parameters, the current location and movement history of the machine can be viewed on google maps® at any time.



Farm Analyzer

A new machine must not only be technically convincing, but must also be cost effective. For an economic evaluation of an investment, a large number of parameters may play a role. These parameters go far beyond the technical properties of a machine and are individual for each farm or company.

In order to meet this complexity GRIMME offers a software tool called Farm Analyzer. The tool displays decision-relevant parameters for an economical consultation.



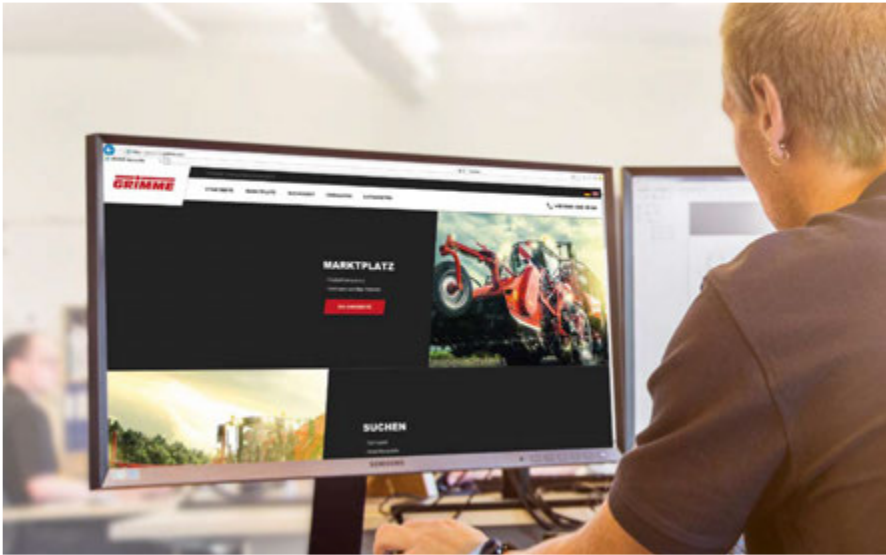
Geofencing

Locations are determined easily and geofencing acts as an anti theft deterrent (virtual fence).



Used machinery

On the Internet portal "GRIMME used machinery" (<https://gebrauchte.grimme.com>) machinery can easily be sold or searched by dealers and by customers. An offer for refurbishing a machine can also be requested. On request, GRIMME will take over the complete marketing, worldwide, including any customs issues that may arise. This saves the seller a lot of time and effort.



Service	GRIMME PREMIUM SERVICES			
	PLUS	PRO	PREMIUM	PROTECT
GRIMME Premium-Check and maintenance service	✓	✓	✓	✓
Extended warranty on the power train of the machine	—	✓	✓	✓
Extended warranty for the whole machine	—	—	✓	✓
Full-Service including wearing parts	—	—	—	✓



For all self-propelled GRIMME harvesters, there are individual agreed service packages available which include the full service inclusive of wearing parts in the highest stage PROTECT.

REXOR 6200/6300 Platinum

Standard equipment


	REXOR 6200 Platinum	REXOR 6300 Platinum
Length	13300 mm	15600 mm
Width	3000 / 3300 mm	
Height in transport position	4000 mm	
Empty weight with basic configuration	28000 kg	32000 kg
Number of rows	6	
Digging unit Oppel wheels	X	
Digging unit walking shares (option)	X	
Lateral mobility Oppel wheels	± 40 mm	
Lateral mobility of walking shares	± 40 mm	
Row width	45 / 50 cm resp. 18 / 20"	
Shift of digging unit - Oppel wheel	±150 mm	
Shift of digging unit - walking share	±200 mm	
Diameter 1st turbine	1700 mm	
Diameter 2nd and 3rd turbine	1500 mm	
Transport web clearance	500 mm	
Transport web pitch	60 mm	
Transport web pitch (option)	50 and 70 mm	
Ring elevator width	900 mm	
Bunker capacity	20000 kg	30000 kg
Bunker volume	30 m³	45 m³
Unloading web width	1800 mm	
Transfer height	4000 mm	
Number of wheels	4	6
Front wheels	Michelin IF 800/70 R38 CEREXBIB	
Centre wheels	–	Michelin 1000/55 R32 CEREXBIB
Rear wheels	Michelin 1000/55 R32 CEREXBIB	Michelin 900/60 R32 CEREXBIB
Angle of steering movement	± 10° / – / ± 25° / ± 35°	± 10° / ± 20° / ± 32° / ± 35°
Inner turning radius	7.50 m	
Transport speed (option)	20 (25, 32, 40) km/h	
Motor power	480 / 653 kW / hp (emission stage V)	
Fuel tank capacity	1300 l	
AdBlue tank capacity	95 l	
Working lights	33 LED-working lights	

More information on

www.grimme.com

and on social media platforms

 facebook.com/GRIMMEUK

 twitter.com/GrimmeUK

 youtube.com/user/GrimmeLandmaschinen



or download our GRIMME app from the
Apple App Store onto your iPad.



No claims can be raised in respect of texts, illustrations, technical specifications, dimensions and weights, equipment as well as performance specifications. They are approximate and non-binding. Changes in the course of technical enhancement are possible at any time.



Download our contact details to your smart phone quickly and easily by means of the QR code!

GRIMME Landmaschinenfabrik GmbH & Co. KG
Hunteburger Straße 32 · 49401 Damme · Germany
Phone +49 5491 666-0 · Fax +49 5491 666-2298
grimme@grimme.de · www.grimme.de

