

POTATO TECHNOLOGY
BEET TECHNOLOGY
VEGETABLE TECHNOLOGY

GRIMME
HARVESTING SUCCESS!

SV 260

2-row, offset trailed potato harvester with large bunker and high separating performance in all soils



Gentle and effective in all soils: SV 260

The bunker harvester from Grimme for highest acreage performance and reduced soil compaction. The approved

design with flat rising main webs which are gentle on the crop is available in modular combination with the variety

of separator assemblies from the Grimme harvesting range: A new, strong range for your harvest!

Table of contents

Intake	4
Sieving systems	5
Separators	6–7
Grading and picking	8
Bunker	9
Tyres and ground protection	10
Machine control and digital technology	10–11
Technical data	12





INTAKE

Gentle harvesting from the start

For an even more accurate guidance, the machine is equipped with a pulled, 2-row intake unit. Large dimensioned, spring mounted disc coulters (1) and 2 haulm feed-in rollers ensure trouble-free digging at intake widths of 540, 580 and 620 mm.

An automatic self-centre steering (2) supports you with the accurate row guidance of the machine.



A big amount of soil in the main web channel may lead to a compaction of the ridges by the diablo rollers. Grimme therefore optionally offers a hydraulic ridge relief (3).

Machines which are used for the windrowing method (2 + 2) can be converted to "half" diablo rollers (4). This prevents the collar from damaging any potatoes.

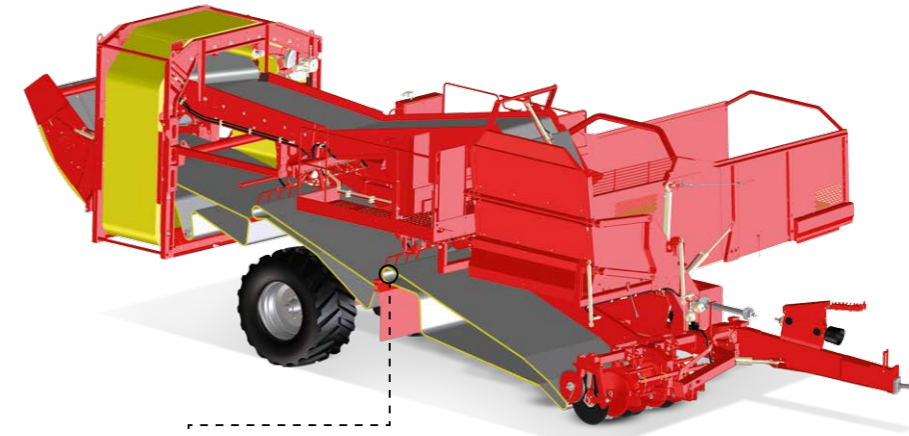


Increased harvest. Gentler handling of the ridge. More convenience. With the excellent Terra Control (5), approved technology which ensures a continuously low diablo pressure is available to you. At the same time, the digging depth remains at a constant level – at any time and with any soil contour.

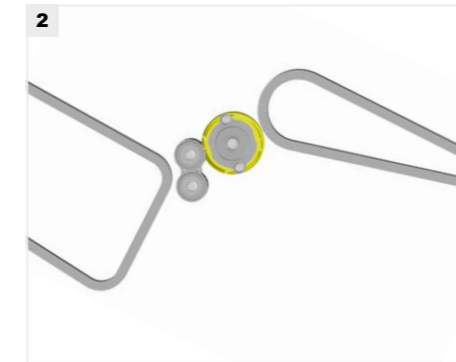
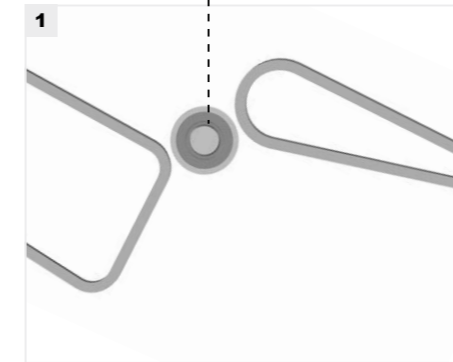


SIEVING SYSTEMS

For efficient soil sieving under heaviest conditions

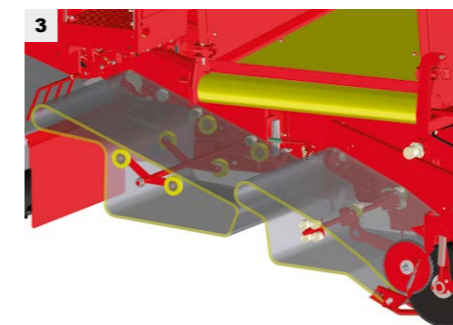


Even when the going gets really "tough", Grimme main web concepts always offer the highest sieving performance and a gentle, flat transport.



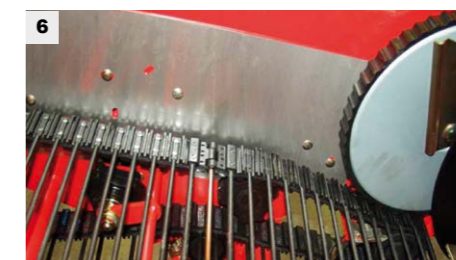
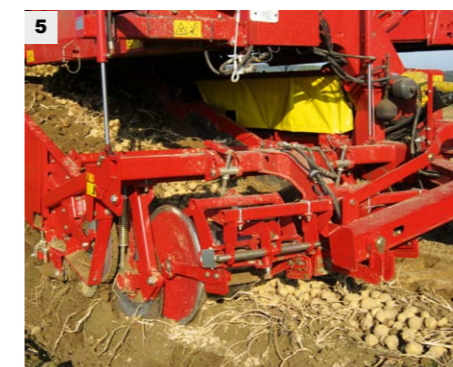
For haulm separation, an extracting roller is fitted between the 1st and 2nd main web (1) as standard.

Patent
Optional: Instead of the extracting roller, the SV 260 can also be equipped with the patented extraction unit (2), for haulm separation that is even more gentle on the crop.



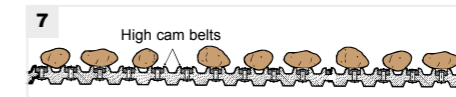
On very heavy grounds, an additional intake web (3) with eccentric agitator increases the sieving.

The extended design results in an even larger sieving surface. In addition, it possible to fit a rocker agitator in the 1st main web (4) in combination with an intake web.



The intake width of 1500 mm or 1700 mm width (option) (5)
High-quality, optionally available stainless steel sheets (6) ensure a gentle, good soil flow without soil sticking to the main web channel.

Main webs that really pamper your harvested crop: already for years, patented high cam belts (7) have been our high level standard!



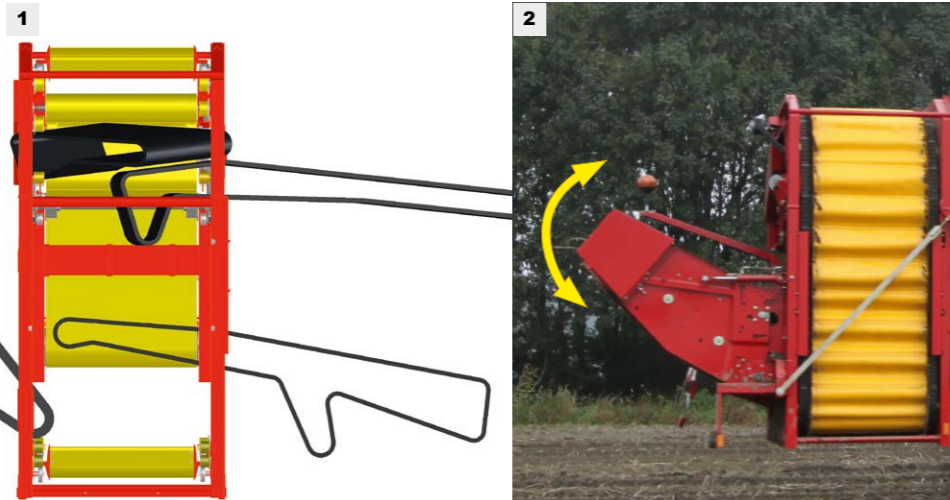


SEPARATORS

Here you will definitely find the right model for you: the SV 260 in 3 different models

Main web model with fine haulm elevator:

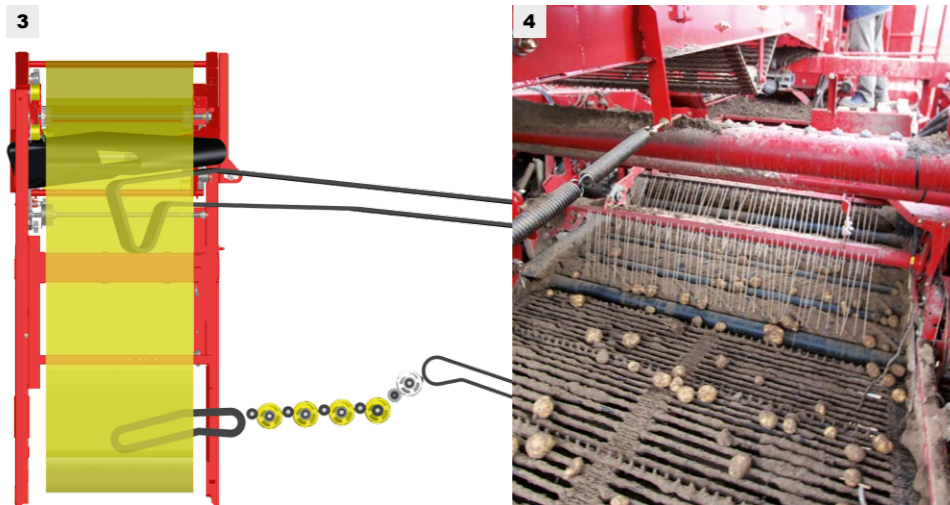
Instead of a separator assembly it is for instance possible to install a fine haulm elevator (1) – including mechanical drive and hydraulic angle adjustment. To minimise harvest losses, the distance between transfer web and hedgehog web remains constant during angle adjustment (2).



Patent

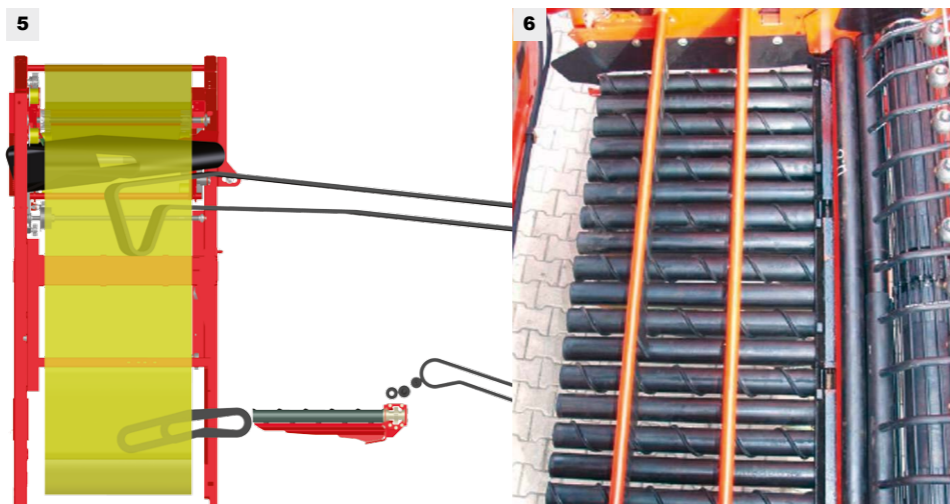
MultiSep separator model:

Even on cloddy, sticky soils and soils containing small stones, the Grimme MultiSep separator (3) facilitates a low-loss and effective trash separation: 5 roller pairs, consisting of a PU spiral segment roller and a rubber covered plain roller make a clean sweep (4). For very small or loose-skinned potatoes and for the use with vegetables, steel rollers are also available.



Roller separator (RS) model:

Even extremely tough, sticky soils and adverse digging conditions do not present a problem for the roller separator (5). With the patented Vario-RS (6) and the hydraulic speed, levelling and distance adjustment, it is possible to react to different crop sizes and harvesting conditions at any time (without roller change).



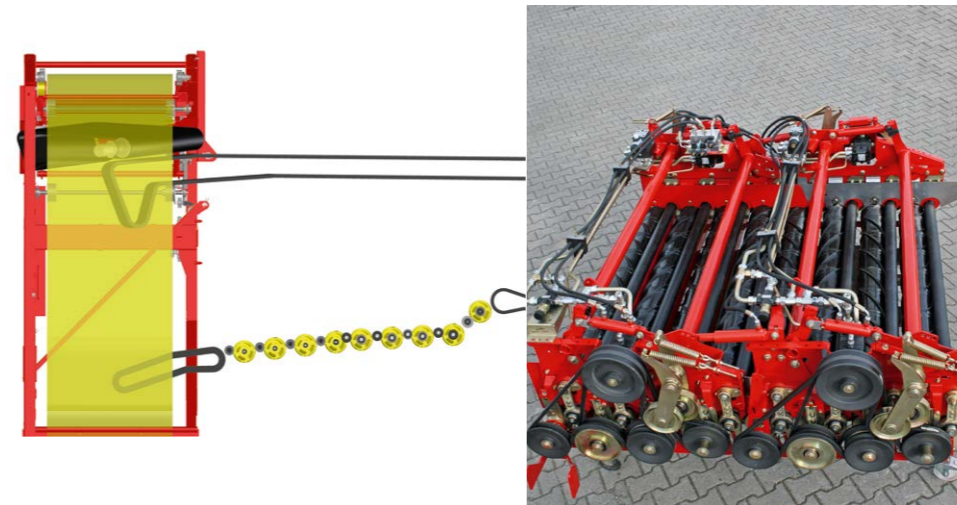
Combination options for any requirement



For an even greater separating performance, it is possible to combine the MultiSep model (A) with a fine haulm elevator at the bottom (B) and one at the top (C).

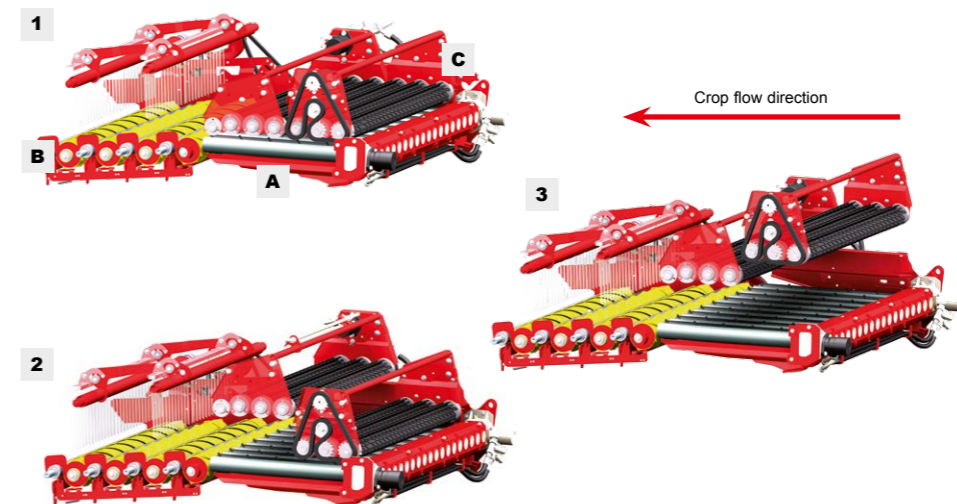


OptiBags for an increased loading capacity and additional soil separation are optionally available.



MultiSep

Double MultiSep separator: For increased separation of clod and haulm



Roller Separator (A) in combination with a MultiSep (B) and TwinSep (C): Partial or complete bypassing of the Roller Separator in dry digging conditions, for crop with non-set skin, vegetables (e.g. onions) or in very stony conditions. The unit is hydraulically driven and controlled from the driver's cab.

Either both TwinSep units are lowered (1) ...
 ... or only the front half of the TwinSep (2) ...
 ... or the TwinSep is completely lifted – no bypass (3).



GRADING AND PICKING

Conveniently harvest best hand-picked quality

Ergonomically designed workplace without sharp edges and bothersome hydraulic lines makes careful picking more convenient. Two easy pick chutes are optionally available.

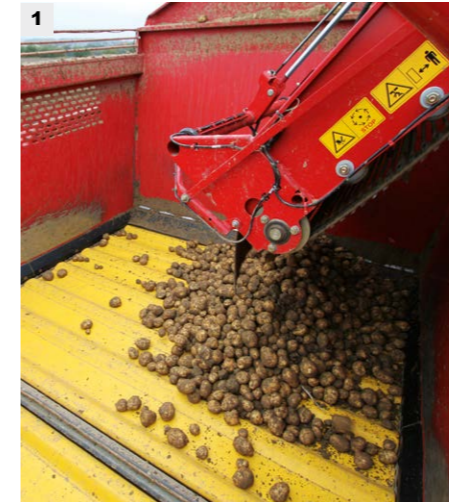


The generous picking platform provides a comfortable workplace for up to six persons. Important machine functions can be easily operated from the terminal at the picking table.



BUNKER

Moving floor bunker: Large, powerful and with a lot of know-how for best harvest quality!



Final conveyor (1): Filling of the bunker starts immediately from the bunker floor. For constantly low drop steps, the filling conveyor is successively raised via the optional automatic final conveyor system. At the same time, the web is pulled forward until the bunker is completely filled.

3 bunker versions are available to choose from (2): 6 tonne bunker (standard), optionally 7.5 tonne bunker or 5.8 tonne overloading bunker.



Drop-step optimised transfer: If desired, the moving floor bunker can be equipped with an adjustable bunker head lowering (3).



Overloading bunker with two separate belts for truly non-stop digging (4).



TYRES AND GROUND PROTECTION

Minimising soil pressure with broad tyres

The tyres minimise the soil pressure which reduce caving in, thus making it easier to pull the machine. Select the matching tyres from our range. Narrow tyres to open up the field 2x 340/85 R38 l/h-side, 1000/50 R25 r/h-side.



600/55-26.5 (standard) 710/45-26.5 (option) 710/50-30.5 (option) 800/45-30.5 (option)

MACHINE CONTROL AND DIGITAL TECHNOLOGY

Consistent operation for top results

Reacting faster: The optional CAN-Bus-controlled video monitoring system Visual Protect facilitates an all-round function monitoring of your digging machine. If there is a problem in the machine, the screen automatically switches to the corresponding camera.



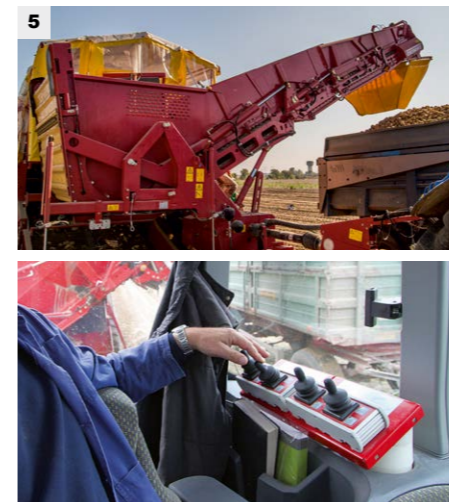
Convenient operation as a standard: intuitive operation with the combination of VC 50 terminal and GBX terminal (1).

For a perfect one-hand operation of the machine, we offer an optional joystick with freely selectable assignment of the individual keys (2).



World-wide unique: the control concept CCI (3) for ISOBUS compatible agricultural machines that spans several manufacturers has been co-developed by Grimme (Option).

Convenience at the push of a button: The optional Clean Control (4) facilitates the simultaneous control of selected separator assemblies, for instance to briefly turn up performance to 100 % for cleaning purposes.



For bunker unloading on the left-hand side of the machine, two additional GBX control terminal can be arranged on the left-hand driver's side, a position that makes sense from an ergonomic point of view (5).

With the control terminal GBT 817, all important picking functions can be set by the personnel at the picking web (6).



Technical data

	SV 260 with fine haulm elevator	SV 260 with MultiSep or Roller Separator
	Machine in transport position with standard tyres and without optional equipment	Machine in transport position with standard tyres and without optional equipment
Length	12360 mm	10500 mm
Width	3300 mm	3300 mm
Height	3900 mm	3900 mm
Weight	Approx. 11900 kg (empty machine without optional equipment)	Approx. 11900 kg (empty machine without optional equipment)

	Basic equipment	Option
Drawbar	Drawbar eye 50 mm	Hydraulic drawbar steering, drawbar ball coupling with 80 mm diameter
Intake	2 share blades, 2- or 3-pieces Intake width 540, 580 or 620 mm Row width 750 mm	Adjustable row width up to 900 mm at 1700 mm Main web channel, stone protection, windrow intake, Bed digging unit, Terra Control, hydraulic ridge relief
Intake web		Sieving area 2.3 m ² Mechanical drive Hydraulic drive Choice of pitch: 28, 32, 35, 40, 45 or 50 mm Rotary agitator in intake web
1st main web	1500 mm wide Sieving area 4.68 m ² Choice of pitch: 28, 32, 35, 40, 45 or 50 mm Mechanical rotary agitator height adjustable, Pitch-independent rubber friction drive	Rubber covered bars 1700 mm wide Sieving area 2.8 m ² at intake web Additional rocker agitator Hydraulic height adjustment of the rotary agitator
1st extracting unit	Extracting roller against 1 st main web	Extraction unit, segment roller against double extracting roller
2nd main web	1700 mm wide, sieving area 3.33 m ² Choice of pitch: 28, 32, 35, 40, 45 or 50 mm	Rubber covered bars
2nd extracting unit	Extracting roller against 2 nd main web	Extraction unit, segment roller against double extracting roller
3rd main web	1700 mm wide, sieving area 3.91 m ²	At fine haulm elevator
Separators	MultiSep separator or Roller Separator or fine haulm elevator	Double MultiSep separator or RS roller separator with MultiSep separator, TwinSep/Bypasskit for Roller Separator, Vario Roller Separator, Fine haulm elevator, N-separator
Ring elevator	900 mm wide, canvas	OptiBag
Picking table	With warning system, 1100 mm wide, picking platform for min. 2 x 3 persons, hydraulic drive of the picking web	
Bunker	Unloading height: 4200 mm, capacity: 6000 kg, 2-step drive, infinitely adjustable	Capacity: 6300 kg incl. filling optimisation, potato discharge with drop brake, hydraulic folding device with drop brake, automatic filling system, 7.5 tonne bunker (machine width 3300 mm), 5.8 tonne bunker with direct overloading (machine width 3300 mm), adjustable bunker head lowering, big-bag device with drop brake, automatic final conveyor
Axle	Hydraulic steering axle Levelling	Axle self-centre steering Hydrostatic wheel drive Automatic levelling
Wheels	2x 710/45-26.5	2x 710/50-30.5 2x 340/85 R38 l/h, 800/45-30.5 r/h 2x 800/45-30.5 2x 1000/50 R25
Machine control system	CAN-Bus electronic system with diagnosis option	
Power requirement	Tractor with at least 90 kW (Values apply to use under normal operating conditions. Values can be higher in case of unfavourable operating conditions.)	

No claims can be raised in respect of texts, illustrations, technical specifications, dimensions and weights, equipment as well as performance specifications. They are approximate and non-binding. Changes in the course of technical enhancement are possible at any time.

GRIMME
HARVESTING SUCCESS!